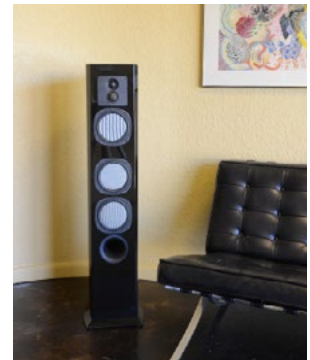
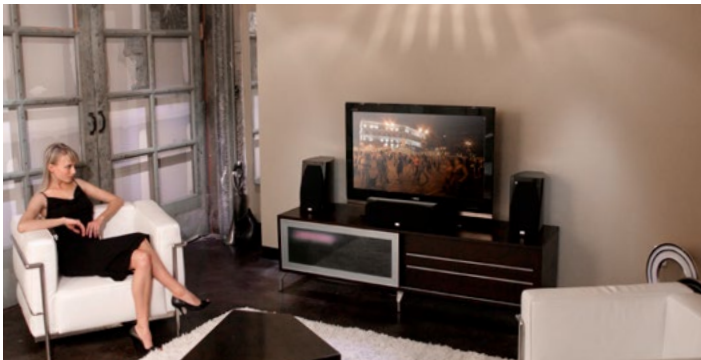


PREMIER COLLECTION

PC0.5 • PC1.5 • PC33.5 • PC3.5 • PC9.5 • PC-SURROUND-II • PC60 CA



Combining a sleek exterior with innovative technology, Premier Collection (PC) speakers express the natural character, timbre and ambience of recorded sound. Whether you're listening to a classic cello performance or an action-packed Hollywood blockbuster, PC speakers deliver unmatched realism and clarity for an immersive listening experience and reproduce content so accurately you will feel like you're front row center at your favorite concert hall or movie theater.

Absolute Phase® crossovers ensure that each driver will produce only the frequencies for which it was designed, while also keeping the drivers electrically and acoustically in phase with one another. Yet, engineering our flagship line did not end with crossovers: PC speakers also incorporate patented RPF® flat-piston woofers, developed in house by PhaseTech

engineers, these innovative woofers utilize a tri-laminate of Kevlar, RPF®, and glass fiber (patent #4566178) that match the speed and accuracy of our soft dome tweeters. Not only are the RPF drivers capable of accelerating quickly to high acoustic levels while producing crystal-clear sound at any volume, they also generate a much larger dispersion pattern in both the horizontal and vertical plane. This more widely dispersed sound inhibits the "break-up modes" that deteriorate clarity and smoothness. The result is a speaker that produces seamless transitions from the lowest frequencies to the highest, making them disappear into the room.

The innovative, and stylish Premier Collection series represents the highest expression of all PhaseTech's 60 plus years of experience in speaker design and manufacturing.

PREMIER COLLECTION

PC0.5 • PC1.5 • PC33.5 • PC3.5 • PC9.5 • PC-SURROUND-II • PC60 CA

PC0.5



Description: 2-Way Bookshelf
Tweeter: 1" Patented Woven Synthetic Soft Dome
Woofer: 5.25" Kevlar/RPF®/ Glass Fiber Composite Flat-Piston w/ NBR Surround
Frequency Response: 58 Hz - 22 kHz
Sensitivity: 88 dB
Impedance: 4Ω
Power Handling: 20-120 Watts
Dimensions: 11.5" H x 6.9" W x 9.6" D
Weight: 11 lbs.
In-Ceiling/In-Wall Pairings: CI6.1X, CI6.2X, CI20X, CI60 VIII Kit, CI-SURR-X, CI110-SIII, CI150

PC1.5



Description: 2-Way Bookshelf
Tweeter: 1" Patented Woven Synthetic Soft Dome
Woofer: 6.5" Kevlar/RPF®/ Glass Fiber Composite Flat-Piston w/ NBR Surround
Frequency Response: 40 Hz - 22 kHz
Sensitivity: 90 dB
Impedance: 4Ω
Power Handling: 20-150 Watts
Dimensions: 13.6" H x 7.9" W x 12.3" D
Weight: 14 lbs.
In-Ceiling/In-Wall Pairings: CI6.1X, CI6.2X, CI20X, CI60 VIII Kit, CI-SURR-X, CI110-SIII, CI150

PC33.5



Description: 3-Way LCR/Center Channel
Tweeter: 1" Patented Woven Synthetic Soft Dome
Woofer: (2) 5.25" Kevlar/RPF®/ Glass Fiber Composite Flat-Piston w/ NBR Surround
Frequency Response: 56 Hz - 22 kHz
Sensitivity: 90 dB
Impedance: 4Ω
Power Handling: 20-200 Watts
Dimensions: 6.9" H x 18" W x 9.6" D
Weight: 18.5 lbs.
In-Ceiling/In-Wall Pairings: CI6.1X, CI6.2X, CI20X, CI60 VIII Kit, CI-SURR-X, CI110-SIII, CI150

PC3.5



Description: 3-Way LCR/Center Channel
Tweeter: 1" Patented Woven Synthetic Soft Dome
Midrange: 1.5" Patented Woven Synthetic Soft Dome
Woofer: (2) 6.5" Kevlar/RPF®/ Glass Fiber Composite Flat-Piston w/ NBR Surround
Frequency Response: 36 Hz - 22 kHz
Sensitivity: 91 dB
Impedance: 4Ω
Power Handling: 20-250 Watts
Dimensions: 22" H x 7.9" W x 12.3" D
Weight: 32 lbs.
In-Ceiling/In-Wall Pairings: CI6.2X, CI7.3X, CI60 VIII Kit, CI70X, CI-SURR-X, CI110-SIII, CI120, CI130

PC9.5



Description: 3-Way Tower
Tweeter: 1" Patented Woven Synthetic Soft Dome
Woofer: (3) 6.5" Kevlar/RPF®/ Glass Fiber Composite Flat-Piston w/ NBR Surround
Frequency Response: 32 Hz - 22 kHz
Sensitivity: 91 dB
Impedance: 4Ω
Power Handling: 20-450 Watts
Dimensions: 45.5" H x 9" W x 14.7" D
Weight: 66 lbs.
In-Ceiling/In-Wall Pairings: CI6.2X, CI7.3X, CI20X, CI60 VIII Kit, CI70X, CI-SURR-X, CI110-SIII, CI120, CI130

PC-SURROUND-II



Description: 3-Way Switchable Bipole/Dipole Surround
Tweeter: 1" Patented Woven Synthetic Soft Dome
Midranges: (2) 4" Polypropylene
Woofer: 5.25" Kevlar/RPF®/ Glass Fiber Composite Flat-Piston w/ NBR Surround
Frequency Response: 60 Hz - 22 kHz
Sensitivity: 91 dB
Impedance: 4Ω
Power Handling: 20-150 Watts
Dimensions: 15.25" H x 14.5" W x 5.25" D
Weight: 19 lbs.

PC60 CA



Description: 2-Way Limited Edition Bookshelf
Tweeter: 1" Patented Woven Synthetic Soft Dome
Woofer: 6.5" Kevlar/RPF®/ Glass Fiber Composite Flat-Piston w/ NBR Surround
Frequency Response: 60 Hz - 22 kHz
Sensitivity: 88 dB
Impedance: 4Ω
Power Handling: 20-150 Watts
Dimensions: 13.25" H x 8.625" W x 8.25" D
Weight: 16 lbs.